



**S**

**S FIT EQ**

**Laufenn**

Journey in Style

When the blue that represents rational value and the red that represents emotional value meet, the violet of Laufenn is born, providing consumers with both practical value and satisfaction.



Laufenn ensures an exceptional driving experience through an optimised performance in any weather or any season.

Laufenn provides the performance you need throughout a wide range of conditions in your everyday life, no matter the road condition.

### **Confident**

The ability Laufenn provides is rooted in its uncompromising commitment to quality. When you go to work, see friends or take a road trip Laufenn is there with you everyday providing optimised performance and confidence.

### **Simple**

Laufenn is simple, there's no add-ons and nothing to spoil your driving experience. Committed to the basics, Laufenn offers a pure driving experience tailored to you for your driving needs.

### **Open-minded**

Laufenn refuses to accept a one-size-fits-all attitude. You know value when you see it so by making Laufenn your choice is transforming your own value into a new trend.

### **Sensible**

Laufenn understands your refined taste and expresses your excellent style, representing your fashionable personality.



***S FIT EQ***

# Premium ultra-high performance summer tyre



Wet



Dry



Fuel efficiency

The S FIT EQ is designed for drivers looking for high speed driving in wet and dry conditions.



## FEATURES

- **Asymmetric tread design**
- **Summer** : Optimised dry, wet performance
- **Long tread life**
- **Excellent stability and handling performance**
- **Quiet, smooth driving**

## *S FIT EQ*

**Speed Symbol** : H~Y

**S.W.** : 185~255

**Series** : 35~65

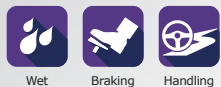
**Inch** : 15~19"

**EU Label** : B~E / B~C / W2

## Performance information



# Wet



An advanced asymmetric tread pattern enables excellent performance for any road or driving condition.



### Positive aqua hydro block

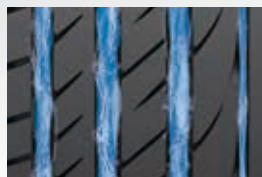
An advanced aqua hydro block design was developed through a 3D hydroplaning simulation to provide highly efficient wet braking.

### Streamlined kerfs and sipes

Streamlined kerfs and sipes provide highly efficient drainage in wet conditions.

### Drainage inducement groove edges

Drainage inducement groove edges help to optimise efficient, wet braking.

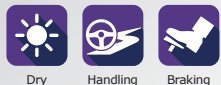


### 4 channel rib type design

A 4 straight groove design improves stability on wet roads.



# Handling and cornering



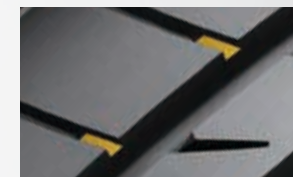
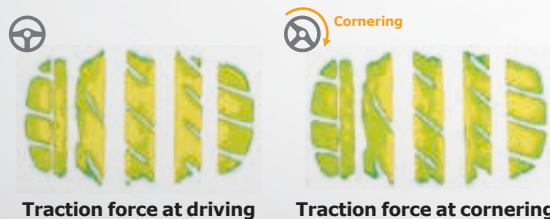
The S FIT EQ helps drivers enjoy a comfortable drive by reducing noise and vibration.

Inside      Outside  
←—————→



## Handling performance

Even loads transfer vertically and laterally, meaning they maintain a stable footshape through an optimal design based on multiple tread radius profiles and the equilibrium carcass line.

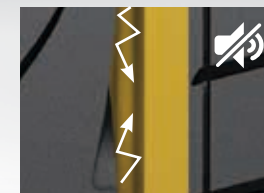


## Tie-bar

Application of tie-bar technologies ensures optimal block stiffness is achieved.

## Cornering and noise reduction rib

A straight rib block applied to the outside of the tyre helps to prevent road noise and increase cornering grip.



## Asymmetric pattern design

Advanced asymmetric pattern design helps to prevent road noise, increase cornering grip and maximise handling performance on dry roads.

# Wear life



The S FIT EQ is designed for drivers who want to ensure both longer wear life and a higher fuel efficiency.

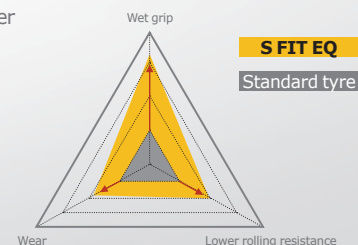


## Special rubber layer

The tread pattern and special rubber structure minimise rotational resistance and maximise fuel efficiency.

## New hybrid compound

The use of high-performance polymer compounds that easily handle 3-dimensional movement, reduces rotational resistance and increases tyre wear life.

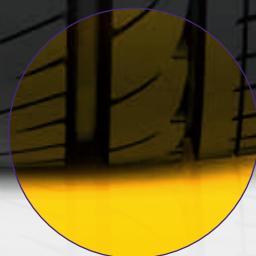


## Longer mileage and even tread wear

An optimised tyre profile designed by an advanced computer-aided simulation improves braking performance and wear by evenly distributing weight over the tyre's contact patch.

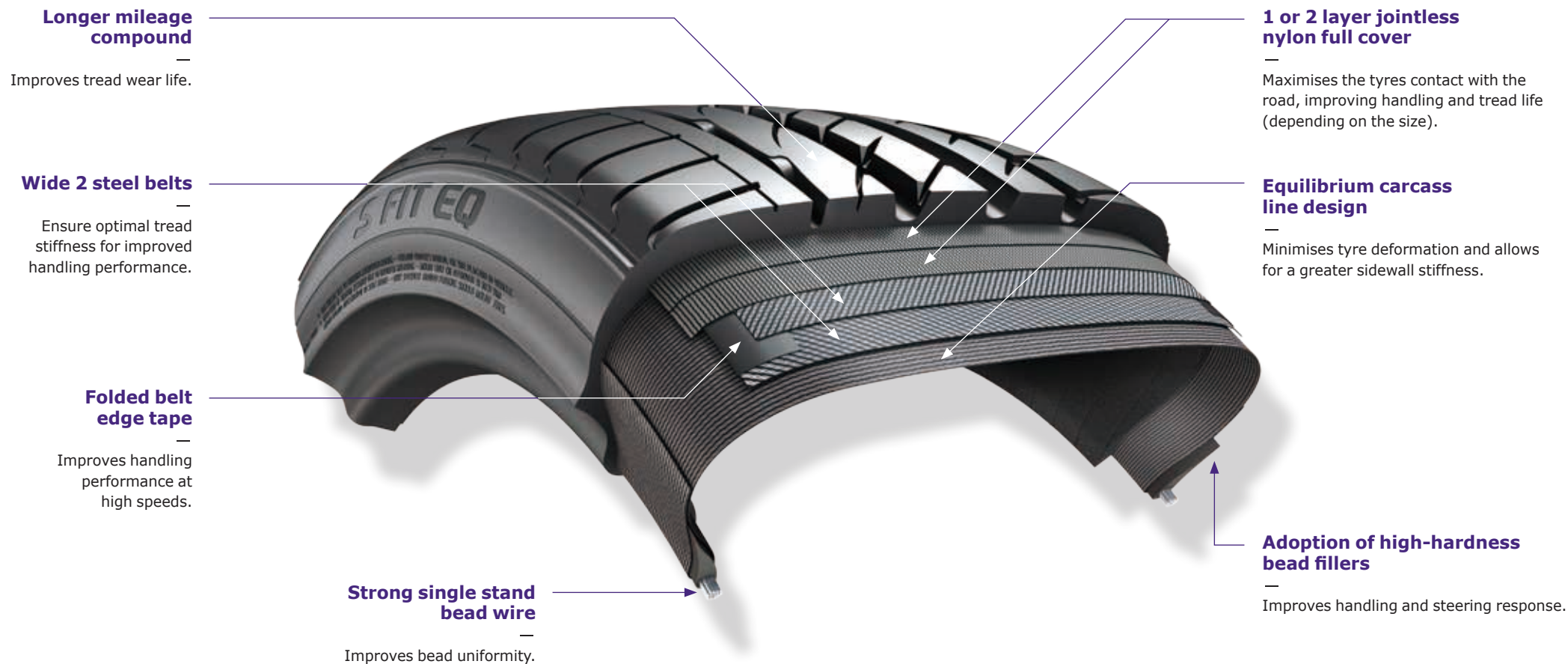


## Even pressure



# TYRE STRUCTURE

The S FIT EQ adopts new technology for premium vehicles engineered for exceptional control and a quieter, more comfortable road.



\* The model size in the structural diagram is for the 225/45ZR18Y XL tyre and the descriptions of structural diagrams may vary by size.



# AVAILABLE SIZES

## 35 Series

Size	LI and SS	Label		
		RR	Wet grip	Wave (dB)
255/35ZR18 XL	94Y	E	C	2 (73dB)
225/35ZR19 XL	88Y	C	C	2 (72dB)
235/35ZR19 XL	91Y	C	C	2 (72dB)
255/35ZR19 XL	96Y	E	C	2 (73dB)

## 40 Series

Size	LI and SS	Label		
		RR	Wet grip	Wave (dB)
225/40ZR18 XL	92Y	E	B	2 (71dB)
235/40ZR18 XL	95Y	C	C	2 (72dB)
245/40ZR18 XL	97Y	C	C	2 (72dB)
245/40ZR19 XL	98Y	C	C	2 (72dB)

## 45 Series

Size	LI and SS	Label		
		RR	Wet grip	Wave (dB)
195/45R16 XL	84V	E	C	2 (72dB)
205/45R16	83V	E	C	2 (71dB)
205/45ZR16	83W	E	C	2 (71dB)
205/45ZR17 XL	88W	C	C	2 (72dB)
215/45ZR17 XL	91W	C	C	2 (72dB)
215/45ZR17 XL	91Y	C	C	2 (72dB)
225/45R17 XL	94V	C	C	2 (72dB)
225/45ZR17 XL	94Y	E	C	2 (72dB)
235/45ZR17 XL	97Y	C	C	2 (72dB)
225/45ZR18 XL	95Y	E	C	2 (72dB)
245/45ZR18 XL	100Y	C	C	2 (72dB)

## 50 Series

Size	LI and SS	Label		
		RR	Wet grip	Wave (dB)
195/50R15	82H	E	C	2 (71dB)
195/50R15	82V	E	C	2 (71dB)
195/50R16	84V	E	C	2 (71dB)
205/50ZR16	87W	C	C	2 (71dB)
205/50ZR17 XL	93W	C	C	2 (72dB)
215/50ZR17 XL	95W	C	C	2 (72dB)
225/50ZR17 XL	98Y	C	C	2 (72dB)

## 55 Series

Size	LI and SS	Label		
		RR	Wet grip	Wave (dB)
185/55R15	82H	E	C	2 (71dB)
185/55R15	82V	E	C	2 (71dB)
195/55R15	85H	C	C	2 (71dB)
195/55R15	85V	C	C	2 (71dB)
195/55R16	87H	C	C	2 (71dB)
195/55R16	87V	C	C	2 (71dB)
205/55R16	91H	C	C	2 (71dB)
205/55R16	91V	C	C	2 (71dB)
205/55R16 XL	94V	C	C	2 (72dB)
205/55ZR16	91W	C	C	2 (71dB)
215/55R16	93V	C	C	2 (71dB)
215/55ZR16 XL	97W	C	C	2 (72dB)
225/55R16	95V	C	C	2 (71dB)
225/55ZR16 XL	99W	C	C	2 (72dB)
225/55ZR17 XL	101W	C	C	2 (72dB)

## 60 Series

Size	LI and SS	Label		
		RR	Wet grip	Wave (dB)
195/60R15	88V	E	C	2 (71dB)
195/60R15	88H	E	C	2 (71dB)
205/60R15	91V	C	C	2 (71dB)
205/60R15	91H	C	C	2 (71dB)
205/60R16	92V	C	C	2 (71dB)
215/60R16 XL	99H	C	C	2 (72dB)
235/60R18 XL	107V	C	C	2 (72dB)

## 65 Series

Size	LI and SS	Label		
		RR	Wet grip	Wave (dB)
195/65R15	91V	C	C	2 (71dB)
205/65R15	94H	C	C	2 (71dB)
235/65R17 XL	108V	B	C	2 (72dB)

***Laufenn***

Fawsley Drive, Heartlands Business Park, Daventry,  
Northamptonshire, NN11 8UG, U.K.

[www.laufenn.com/uk](http://www.laufenn.com/uk)

Tel. +44 (0)1327-304-100 / Fax. +44 (0)1327-304-110